

<>F2 CONNECT

Product Catalogue 2024



www.f2connect.com.tr

Version 1.0

Table of Contents

• Copper Products

- LAN Cables 3
- Patch Panels 4
- Cat.6 UTP Patch Cords 7
- Cat.6A UTP Patch Cords 7
- Cat.6/6A Keystones 8

• F/O Products

- Fiber Optic Cables 11
- Fiber Optic Patch Cords 12
- Couplers 14
- Pigtailed 17
- F/O Accessories 18
- Patch Panels 19

• SFP

- SFP 21
- Industrial Type SFP 26
- BI-DI Industrial Type SFP 29
- BI-DI Type SFP 29
- DAC Cables 31
- Breakout Cables 32
- AOC Cables 33
- Media Converter 34

• Cabinets

- Wall Mounting Cabinets 36
- Free Standing Cabinets 39
- Server Cabinets 44
- Outdoor Cabinets 46

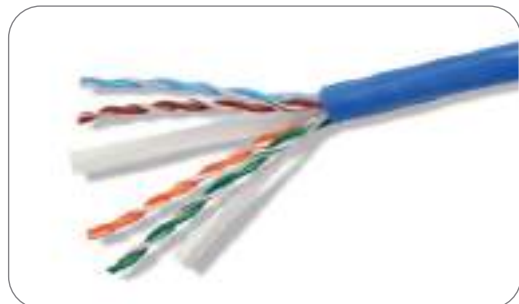
The background of the entire page is a dark blue gradient with a complex, glowing circuit board pattern. The circuit lines are thin and light blue, with several points where they terminate in small, bright blue circular nodes. The overall effect is that of a high-tech, digital environment.

**<>F2
CONNECT**

Copper Products

LAN Cables

UTP LAN Cable Cat.6 F2 Color



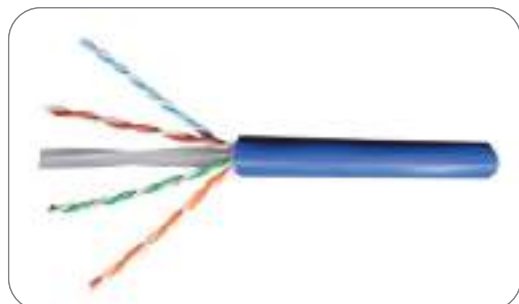
Product Code	F2-U/UTP-4/23-305
Transmission speed	250Mhz
Wire gauge size	23AWG
Conductors material	Bare Copper
External jacket material	LSZH
Conductor Outer Diameter	0.565±0.005mm
Insulation Diameter	0.95±0.03mm
Sheath External Outer Diameter	6.2±0.4 mm
Cable length	305m/ Box
Certification	CE, UL, RoHs, ETL

FTP LAN Cable Cat.6 F2 Color



Product Code	F2-U/FTP-4/23-305
Transmission speed	250Mhz
Wire gauge size	23AWG
Conductors material	Bare Copper
External jacket material	LSZH
Conductor Outer Diameter	0.565±0.005mm
Insulation Diameter	1.12±0.04 mm
Sheath External Outer Diameter	7.4±0.4 mm
Cable length	305m/ Box
Certification	CE, UL, RoHs, ETL

UTP LAN Cable Cat.6A F2 Color



Product Code	F2-U/UTP-6A-4/23-305
Transmission speed	500Mhz
Wire gauge size	23AWG
Conductors material	Bare Copper
External jacket material	LSZH
Conductor Outer Diameter	0.565±0.005mm
Insulation Diameter	1.02±0.03mm
Sheath External Outer Diameter	7.1±0.4 mm
Cable length	305m/ Box, 500m/ Wooden Drum
Certification	CE, UL, RoHs, ETL

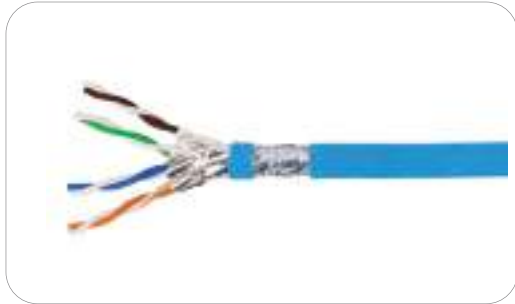
F/FTP LAN Cable Cat.6A F2 Color



Product Code	F2-F/FTP-6A-4/23-305
Transmission speed	500Mhz
Wire gauge size	23AWG
Conductors material	Bare Copper
External jacket material	LSZH
Conductor Outer Diameter	0.565±0.005mm
Insulation Diameter	1.330±0.05mm
Sheath External Outer Diameter	7.5±0.5 mm
Cable length	305m or 500m/ Wooden Drum
Certification	CE, UL, RoHs, ETL

LAN Cables

S/FTP LAN Cable Cat.7 LSZH 305M/Box F2 color 23AWG



Product Code	F2-S/FTP-C7-4/23-305
Transmission speed	600Mhz
Wire gauge size	23AWG
Conductors material	Bare Copper
External jacket material	LSZH
Conductor Outer Diameter	0.580±0.005m
Insulation Diameter	1.350±0.05 mm
Sheath External Outer Diameter	7.8±0.5 mm
Cable length	305m/ Box
Certification	CE, UL, RoHs, ETL

Patch Panels

UTP Empty Patch Panel 24 Port With Back Bar (Matt Surface)



Product Code	F2-C6-BPP-U24P
Termination	Cat.5e/ Cat.6/ Cat.6A Keystone Jack or Coppers
Type of Patch panel	Flat
No. of Port	24 Port
No. of Rack space	1U
Shielding	Unshielded
Punching Dependability	750times
Width	19"
Certification	CE, UL, RoHs, ETL

UTP Cat.6 1U 48 Port Empty Patch Panel With Back Bar



Product Code	F2-C6-BPP-U48P
Termination	Cat.5e/ Cat.6/ Cat.6A Keystone Jack or Coppers
Type of Patch panel	Flat
No. of Port	48 Port
No. of Rack space	1U
Shielding	Unshielded
Punching Dependability	750times
Width	19"
Certification	CE, UL, RoHs, ETL

UTP Cat.6 Patch Panel 24 Port Dual Use IDC With Back Bar



Product Code	F2-C6-PP-U24P
Termination	Snap-in
Type of Patch panel	Flat
No. of Port	24 Port
No. of Rack space	1U
Shielding	Unshielded
Punching Dependability	750times
Width	19"
Certification	CE, UL, RoHs, ETL

Patch Panels

UTP Empty 1U Patch Panel With Cable Manager New Type



Product Code	F2-C6-BPP-U24P-2
Termination	Cat.5e/ Cat.6/ Cat.6A Keystone Jack or Coppers
Type of Patch panel	Flat
No. of Port	24 Port
No. of Rack space	1U
Shielding	Unshielded
Punching Dependability	750times
Width	19"
Certification	CE, UL, RoHs, ETL

UTP Cat.6 Patch Panel 24 Port Tool Free



Product Code	F2-C6-PP-U24P-TF
Termination	Snap-in
Type of Patch panel	Flat
No. of Port	24 Port
No. of Rack space	1U
Shielding	Unshielded
Punching Dependability	750times
Width	19"
Certification	CE, UL, RoHs, ETL

FTP Empty Patch Panel 1U 24 Port



Product Code	F2-C6/A-BPP-F24P-1
Termination	Cat.5e/ Cat.6/ Cat.6A Keystone Jack or Coppers
Type of Patch panel	Flat
No. of Port	24 Port
No. of Rack space	1U
Shielding	Unshielded
Punching Dependability	750times
Width	19"
Certification	CE, UL, RoHs, ETL

FTP Empty Patch Panel with Lock Latch Type Cable Manager



Product Code	F2-C6/A-BPP-F24P-2
Termination	Cat.5e/ Cat.6/ Cat.6A Keystone Jack or Coppers
Type of Patch panel	Flat
No. of Port	24 Port
No. of Rack space	1U
Shielding	Unshielded
Punching Dependability	750times
Width	19"
Certification	CE, UL, RoHs, ETL

Patch Panels

UTP Empty 1U Patch Panel 24 Port with Smart Back Bar Folded Type



Product Code	F2-C6/A-BPP-U24P-FT
Termination	Cat.5e/ Cat.6/ Cat.6A Keystone Jack or Coppers
Type of Patch panel	Flat
No. of Port	24 Port
No. of Rack space	1U
Shielding	Unshielded
Punching Dependability	750times
Width	19"
Certification	CE, UL, RoHs, ETL

FTP Empty 1U Patch Panel 24 Port with Smart Back Bar Folded Type



Product Code	F2-C6/A-BPP-F24P-FT
Termination	Cat.5e/ Cat.6/ Cat.6A Keystone Jack or Coppers
Type of Patch panel	Flat
No. of Port	24 Port
No. of Rack space	1U
Shielding	Unshielded
Punching Dependability	750times
Width	19"
Certification	CE, UL, RoHs, ETL

Cat.6 UTP Patch Cords



Number of pairs	4
Number of conductors	8
Transmission speed	250Mhz
Wire gauge size	26 AWG
Thickness of the pin	3μ
External jacket material	LSZH
Certification	CE, UL, RoHs, ETL



Grey



Red



Yellow



Blue



Black

	Grey	Red	Yellow	Blue	Black
0.20m	F2-C6-PC0020G	F2-C6-PC0020R	F2-C6-PC0020Y	F2-C6-PC0020BL	F2-C6-PC0020B
0.25m	F2-C6-PC0025G	F2-C6-PC0025R	F2-C6-PC0025Y	F2-C6-PC0025BL	F2-C6-PC0025B
0.50m	F2-C6-PC0050G	F2-C6-PC0050R	F2-C6-PC0050Y	F2-C6-PC0050BL	F2-C6-PC0050B
1m	F2-C6-PC0100G	F2-C6-PC0100R	F2-C6-PC0100Y	F2-C6-PC0100BL	F2-C6-PC0100B
2m	F2-C6-PC0200G	F2-C6-PC0200R	F2-C6-PC0200Y	F2-C6-PC0200BL	F2-C6-PC0200B
3m	F2-C6-PC0300G	F2-C6-PC0300R	F2-C6-PC0300Y	F2-C6-PC0300BL	F2-C6-PC0300B
5m	F2-C6-PC0500G	F2-C6-PC0500R	F2-C6-PC0500Y	F2-C6-PC0500BL	F2-C6-PC0500B
7m	F2-C6-PC0700G	F2-C6-PC0700R	F2-C6-PC0700Y	F2-C6-PC0700BL	F2-C6-PC0700B
10m	F2-C6-PC1000G	F2-C6-PC1000R	F2-C6-PC1000Y	F2-C6-PC1000BL	F2-C6-PC1000B
15m	F2-C6-PC1500G	F2-C6-PC1500R	F2-C6-PC1500Y	F2-C6-PC1500BL	F2-C6-PC1500B

Cat.6A UTP Patch Cords



Number of pairs	4
Number of conductors	8
Transmission speed	500Mhz
Wire gauge size	24 AWG
Thickness of the pin	3μ
External jacket material	LSZH
Certification	CE, UL, RoHs, ETL



Grey



Red



Yellow



Blue



Black

	Grey	Red	Yellow	Blue	Black
0.25m	F2-C6A-PC0025G	F2-C6A-PC0025R	F2-C6A-PC0025Y	F2-C6A-PC0025BL	F2-C6A-PC0025B
0.50m	F2-C6A-PC0050G	F2-C6A-PC0050R	F2-C6A-PC0050Y	F2-C6A-PC0050BL	F2-C6A-PC0050B
1m	F2-C6A-PC0100G	F2-C6A-PC0100R	F2-C6A-PC0100Y	F2-C6A-PC0100BL	F2-C6A-PC0100B
2m	F2-C6A-PC0200G	F2-C6A-PC0200R	F2-C6A-PC0200Y	F2-C6A-PC0200BL	F2-C6A-PC0200B
3m	F2-C6A-PC0300G	F2-C6A-PC0300R	F2-C6A-PC0300Y	F2-C6A-PC0300BL	F2-C6A-PC0300B

Cat6/6A UTP Keystone

Cat.6 UTP Keystone Jack, 180 Degree



Product Code	F2-C6-U-180KJ / F2-C6-U-180KJ -W
Transmit capacity	250MHz
Wire Gauge Supported	22-26AWG
Housing material	PC
Punching duration	250times
RJ45 jack life	750times
Termination type	Toolless
Thickness of the pin	3μ
Wiring scheme	T568A & T568B
Certification	CE, UL, RoHs, ETL

Cat.6 UTP Keystone Jack, 180 Degree, White Color



Product Code	F2-C6-U-180KJ-W2
Transmit capacity	250MHz
Wire Gauge Supported	22-26AWG
Housing material	PC
Punching duration	250times
RJ45 jack life	750times
Termination type	Tool
Thickness of the pin	3μ
Wiring scheme	T568A & T568B
Certification	CE, UL, RoHs, ETL

Cat.6 UTP Keystone Jack, 90 Degree, White Color



Product Code	F2-C6-U-90KJ
Transmit capacity	250MHz
Wire Gauge Supported	22-26AWG
Housing material	PC
Punching duration	250times
RJ45 jack life	750times
Termination type	Tool
Thickness of the pin	3μ
Wiring scheme	T568A & T568B
Certification	CE, UL, RoHs, ETL

Cat.6 UTP Keystone Jack, 180 Degree



Product Code	F2-C6-U-KJL1
Transmit capacity	250MHz
Wire Gauge Supported	22-26AWG
Housing material	PC
Punching duration	250times
RJ45 jack life	750times
Termination type	Toolless
Thickness of the pin	3μ
Wiring scheme	T568A & T568B
Certification	CE, UL, RoHs, ETL

Cat6/6A UTP Keystones

Cat.6 UTP Keystone Jack, 180 degree



Product Code	F2-C6-U-180KJ / F2-C6-U-180KJW
Transmit capacity	250MHz
Wire Gauge Supported	22-26AWG
Housing material	PC
Punching duration	250times
RJ45 jack life	750times
Termination type	Tool
Thickness of the pin	3μ
Wiring scheme	T568A & T568B
Certification	CE, UL, RoHs, ETL

Cat.6A UTP Keystone Jack, 180 Degree



Product Code	F2-C6A-U-180KJ-W/B
Transmit capacity	500MHz
Wire Gauge Supported	22-26AWG
Housing material	PC
Punching duration	250times
RJ45 jack life	750times
Termination type	Toolless
Thickness of the pin	3μ
Wiring scheme	T568A & T568B
Certification	CE, UL, RoHs, ETL

Cat.6A FTP Keystone Jack, 180 Degree, Metal



Product Code	F2-C6A-F-180KJ
Transmit capacity	500MHz
Wire Gauge Supported	22-26AWG
Housing material	Zinc Alloy
Punching duration	250times
RJ45 jack life	750times
Termination type	Toolless
Thickness of the pin	3μ
Wiring scheme	T568A & T568B
Certification	CE, UL, RoHs, ETL

Cat.6A FTP Keystone Jack, 180Degree, Metal



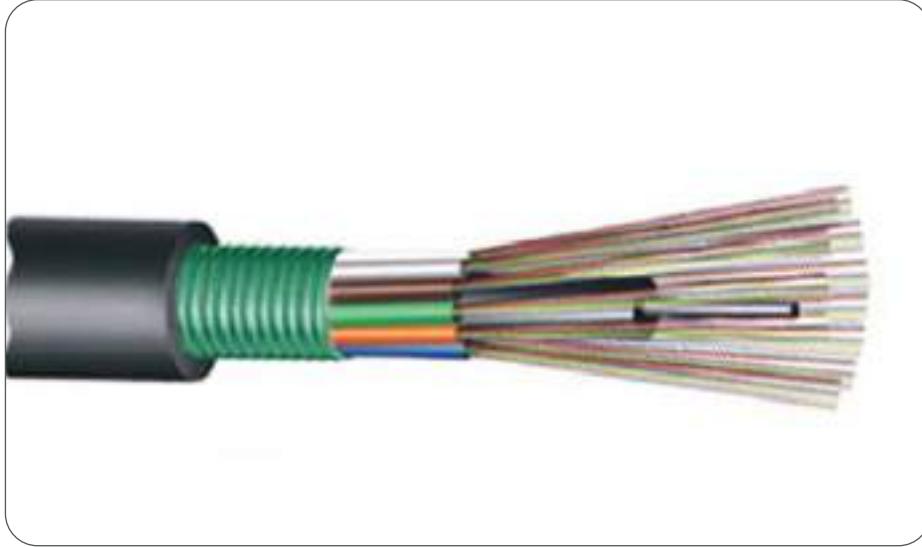
Product Code	F2-C6A-F-180KJ-2
Transmit capacity	500MHz
Wire Gauge Supported	22-26AWG
Housing material	Zinc Alloy
Punching duration	250times
RJ45 jack life	750times
Termination type	Tool
Thickness of the pin	3μ
Wiring scheme	T568A & T568B
Certification	CE, UL, RoHs, ETL



<>F2
CONNECT

F/O Products

Fiber Optic Cables



Good mechanical and temperature performance

High strength loose tube that is hydrolysis resistant

Special tube filling compound ensures a critical of fiber

Specially designed compact structure is good at preventing loose tubes from shrinking

Crush resistance and flexibility

PE sheath protects cable from ultraviolet radiation

The following measures are taken to ensure the cable watertight:

Steel wire used as the central strength member

Loose tube filling compound

100% cable core filling

PSP enhancing moisture-proof

MOQ (Neutral): 2KM

Fiber Optic Cables

F2-F08C-OS2	8 Core SM OS2, 9/125 μ , 9mm Diameter, Unitube, Shielded
F2-F08C-OM3	8 Core MM OM3, 50/125 μ , 9mm Diameter, Unitube, Shielded
F2-F012C-OS2	12 Core SM OS2, 9/125 μ , 9mm Diameter, Unitube, Shielded
F2-F012C-OM3	12 Core MM OM3, 50/125 μ , 9mm Diameter, Unitube, Shielded

Fiber Optic Patch Cords

LC-LC Patch Cord (Duplex) OS2 2.0mm LSZH Jacket



Product Code:	F2-LCLC-OS2-XXXX
Return Loss:	PC>45 dB
Insertion Loss:	<0.3 dB
Operating Temperature:	-40C~85C
Storage Temperature:	-50C~85C
Industry Standart:	TA-NWT-001209

SC-LC Patch Cord (Duplex) OS2 2.0mm LSZH Jacket



Product Code:	F2-SCLC-OS2-XXXX
Return Loss:	PC>45 dB
Insertion Loss:	<0.3 dB
Operating Temperature:	-40C~85C
Storage Temperature:	-50C~85C
Industry Standart:	TA-NWT-001209

LC-LC Patch Cord (Duplex) OM3 2.0mm LSZH Jacket



Product Code:	F2-LCLC-OM3-XXXX
Return Loss:	PC>45 dB
Insertion Loss:	<0.3 dB
Operating Temperature:	-40C~85C
Storage Temperature:	-50C~85C
Industry Standart:	TA-NWT-001209

SC-LC Patch Cord (duplex) OM3 2.0mm LSZH Jacket



Product Code:	F2-SCLC-OM3-XXXX
Return Loss:	PC>45 dB
Insertion Loss:	<0.3 dB
Operating Temperature:	-40C~85C
Storage Temperature:	-50C~85C
Industry Standart:	TA-NWT-001209

Fiber Optic Patch Cords

SC-LC Patch Cord (Duplex) OM4 2.0mm LSZH Jacket



Product Code:	F2-SCLC-OM4-XXXX
Return Loss:	PC>45 dB
Insertion Loss:	<0.3 dB
Operating Temperature:	-40C~85C
Storage Temperature:	-50C~85C
Industry Standart:	TA-NWT-001209

LC-LC Patch Cord (Duplex) OM4 2.0mm LSZH Jacket



Product Code:	F2-LCLC-OM4-XXXX
Return Loss:	PC>45 dB
Insertion Loss:	<0.3 dB
Operating Temperature:	-40C~85C
Storage Temperature:	-50C~85C
Industry Standart:	TA-NWT-001209

		Multimode OM3	Multimode OM4	Singlemode OS2
LC-LC	2m	F2-LCLC-OM3-0200	F2-LCLC-OM4-0200	F2-LCLC-OS2-0200
	3m	F2-LCLC-OM3-0300	F2-LCLC-OM4-0300	F2-LCLC-OS2-0300
	5m	F2-LCLC-OM3-0500	F2-LCLC-OM4-0500	F2-LCLC-OS2-0500
	7m	F2-LCLC-OM3-0700	F2-LCLC-OM4-0700	F2-LCLC-OS2-0700
SC-LC	2m	F2-SCLC-OM3-0200	F2-SCLC-OM4-0200	F2-SCLC-OS2-0200
	3m	F2-SCLC-OM3-0300	F2-SCLC-OM4-0300	F2-SCLC-OS2-0300
	5m	F2-SCLC-OM3-0500	F2-SCLC-OM4-0500	F2-SCLC-OS2-0500
	7m	F2-SCLC-OM3-0700	F2-SCLC-OM4-0700	F2-SCLC-OS2-0700

XXXX(Cable Length/mm)

Coupler

SC-SC Duplex Coupler OS2



Product Code:	F2-SCSC-OS2-DC
Connector:	9/125 μ
Fiber class:	OS2
Ferrule:	Ceramic
Color:	Blue
Insertion Loss:	<0.30 dB
Durability (500 Mating)	0.20 dB Max Increase
Operating Temperature:	-40°C~85°C

LC-LC Duplex Coupler OS2



Product Code:	F2-LCLC-OS2-DC
Connector:	9/125 μ
Fiber class:	OS2
Ferrule:	Ceramic
Color:	Blue
Insertion Loss:	<0.30 dB
Durability (500 Mating)	0.20 dB Max Increase
Operating Temperature:	-40°C~85°C

SC-SC Duplex Coupler OM3



Product Code:	F2-SCSC-OM3-DC
Connector:	50/125 μ
Fiber class:	OM3
Ferrule:	Ceramic
Color:	Turquoise
Insertion Loss:	<0.50 dB
Durability (500 Mating)	0.20 dB Max Increase
Operating Temperature:	-40°C~85°C

LC-LC Duplex Coupler OM3



Product Code:	F2-LCLC-OM3-DC
Connector:	50/125 μ
Fiber class:	OM3
Ferrule:	Ceramic
Color:	Turquoise
Insertion Loss:	<0.50 dB
Durability (500 Mating)	0.20 dB Max Increase
Operating Temperature:	-40°C~85°C

Coupler

LC-LC Duplex Coupler OM4



Product Code:	F2-LCLC-OM4-DC
Connector:	50/125 μ
Fiber class:	OM4
Ferrule:	Ceramic
Color:	Purple
Insertion Loss:	<0.50 dB
Durability (500 Mating)	0.20 dB Max Increase
Operating Temperature:	-40°C~85°C

SC-SC Duplex Coupler OM4



Product Code:	F2-SCSC-OM4-DC
Connector:	50/125 μ
Fiber class:	OM4
Ferrule:	Ceramic
Color:	Purple
Insertion Loss:	<0.50 dB
Durability (500 Mating)	0.20 dB Max Increase
Operating Temperature:	-40°C~85°C

SC-SC Quad Coupler OS2



Product Code:	F2-SCSC-OS2-QC
Connector:	50/125 μ
Fiber class:	OS2
Ferrule:	Zirconia
Color:	Blue
Insertion Loss:	<0.2 dB
Durability (500 Mating)	0.20 dB Max Increase
Operating Temperature:	-40°C~85°C

SC-SC Quad Coupler OM3



Product Code:	F2-SCSC-OM3-QC
Connector:	50/125 μ
Fiber class:	OM3
Ferrule:	Zirconia
Color:	Turquoise
Insertion Loss:	<0.10 dB
Durability (500 Mating)	0.20 dB Max Increase
Operating Temperature:	-40°C~85°C

Coupler

LC-LC Duplex Coupler OM4



Product Code:	F2-LCLC-OM4-QC
Connector:	50/125 μ
Fiber class:	OM4
Ferrule:	Zirconia
Color:	Purple
Insertion Loss:	<0.10 dB
Durability (500 Mating)	0.20 dB Max Increase
Operating Temperature:	-40°C~85°C

	Multimode OM3	Multimode OM4	Singlemode OS2
LC	F2-LCLC-OM3-DC	F2-LCLC-OM4-DC	F2-LCLC-OS2-DC
	F2-LCLC-OM3-QC	F2-LCLC-OM4-QC	F2-LCLC-OS2-QC
SC	F2-SCSC-OM3-DC	F2-SCSC-OM4-DC	F2-SCSC-OS2-DC
	F2-SCSC-OM3-QC	F2-SCSC-OM4-QC	F2-SCSC-OS2-QC

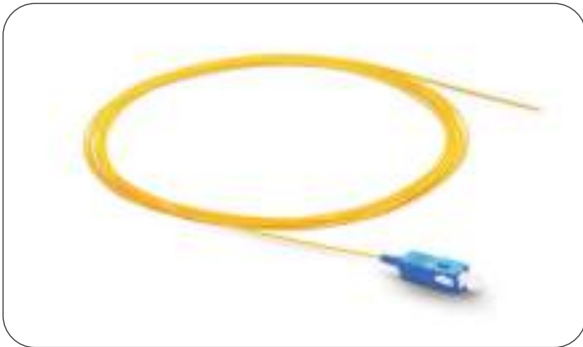
Pigtail

SC Pigtail OS2 0.9mm,LSZH



Product Code:	F2-SC-OS2-PT
Fiber diameter:	9/125 μ
Fiber class:	OS2
Cable sheath:	LSOH
Mode:	Singlemode
Return Loss:	PC>45 dB
Insertion Loss:	<0.3 dB
Operating Temperature:	-40°C~85°C
Storage Temperature:	-50°C~85°C

LC Pigtail OS2 0.9mm,LSZH



Product Code:	F2-LC-OS2-PT
Fiber diameter:	9/125 μ
Fiber class:	OS2
Cable sheath:	LSOH
Mode:	Singlemode
Return Loss:	PC>45 dB
Insertion Loss:	<0.3 dB
Operating Temperature:	-40°C~85°C
Storage Temperature:	-50°C~85°C

SC Pigtail OM3 0.9mm,LSZH



Product Code:	F2-SC-OM3-PT
Fiber diameter:	50/125 μ
Fiber class:	OM3
Cable sheath:	LSOH
Mode:	Multimode
Return Loss:	MM PC > 25 dB
Insertion Loss:	MM PC max. 0.4 dB
Operating Temperature:	-25°C~80°C
Storage Temperature:	-20°C~65°C

LC Pigtail OM3 0.9mm,LSZH



Product Code:	F2-LC-OM3-PT
Fiber diameter:	50/125 μ
Fiber class:	OM3
Cable sheath:	LSOH
Mode:	Multimode
Return Loss:	MM PC > 25 dB
Insertion Loss:	MM PC max. 0.4 dB
Operating Temperature:	-25°C~80°C
Storage Temperature:	-20°C~65°C

Pigtail

SC Pigtail OM4 0.9mm,LSZH



Product Code:	F2-SC-OM4-PT
Fiber diameter:	50/125 μ
Fiber class:	OM4
Cable sheath:	LSOH
Mode:	Multimode
Return Loss:	MM PC > 25 dB
Insertion Loss:	MM PC max. 0.4 dB
Operating Temperature:	-25°C~80°C
Storage Temperature:	-20°C~65°C

LC Pigtail OM4 0.9mm,LSZH



Product Code:	F2-LC-OM4-PT
Fiber diameter:	50/125 μ
Fiber class:	OM4
Cable sheath:	LSOH
Mode:	Multimode
Return Loss:	MM PC > 25 dB
Insertion Loss:	MM PC max. 0.4 dB
Operating Temperature:	-25°C~80°C
Storage Temperature:	-20°C~65°C

Multimode OM3

Multimode OM4

Singlemode OS2

LC	F2-LC-OM3-PT	F2-LC-OM4-PT	F2-LC-OS2-PT
SC	F2-SC-OM3-PT	F2-SC-OM4-PT	F2-SC-OS2-PT

F/O Accessories

Protector Sleeve 60mm



Splice Cassette - for 12 splices



Patch Panels

FO Patch Panel SC Type 24Port 19 Sliding Type Empty



Product code:	F2-PPSC-24
External size:	480*250*1U
Winding radius:	≥40mm
Fiber capacity:	48cores
Installing:	Rack Mounted
Working temperature:	-25°C~+45°C
Atmosphere pressure:	70~106Kpa
Insulated Resistance:	2×10MΩ/500V (DC)

FO Patch Panel LC Type 24Port 19 Sliding Type Empty



Product code:	F2-PPLC-24
External size:	480*250*1U
Winding radius:	≥40mm
Fiber capacity:	48cores
Installing:	Rack Mounted
Working temperature:	-25°C~+45°C
Atmosphere pressure:	70~106Kpa
Insulated Resistance:	2×10MΩ/500V (DC)



<>F2 CONNECT

SFP

SFP

1.25Gpbs Multimode SFP



Product Code: F2-SX-MM-D

Data Rate: 1.25 Gbps

SFP Multimode

Temperature Range: 0°C ~ +70°C

DDM (Dynamic Diagnostic Monitoring) support

Duplex LC Connector

1.25Gpbs Singlemode SFP



Product Code: F2-LX-SM-10-D

Data Rate: 1.25 Gbps

SFP Singlemode

Temperature Range: 0°C ~ +70°C

DDM (Dynamic Diagnostic Monitoring) support

Duplex LC Connector

10Gpbs Multimode SFP+



Product Code: F2-SR-MM-D

Data Rate: 10 Gbps

SFP Multimode

Temperature Range: 0°C ~ +70°C

DDM (Dynamic Diagnostic Monitoring) support

Duplex LC Connector

10Gpbs Singlemode SFP+



Product Code: F2-LR-SM-10-D

Data Rate: 10 Gbps

SFP+ Singlemode

Temperature Range: 0°C ~ +70°C

DDM (Dynamic Diagnostic Monitoring) support

Duplex LC Connector

SFP

25Gbps Multimode SFP28



Product Code: F2-S8-SR-D
Data Rate: 25 Gbps
SFP28 Multimode
Wavelength: 850 nm
OM3 Range: Up to 70 meters
OM4 Range: Up to 100 meters
Temperature Range: 0°C ~ +70°C
DDM (Dynamic Diagnostic Monitoring) support
Duplex LC Connector

25Gbps Singlemode SFP28



Product Code: F2-S8-LR-D
Data Rate: 25 Gbps
SFP28 Singlemode
Range: Up to 10 km
Wavelength: 1310 nm
Temperature Range: 0°C ~ +70°C
DDM (Dynamic Diagnostic Monitoring) support
Duplex LC Connector

40Gbps Multimode QSFP+



Product Code: F2-Q+M-SR4
40 Gbps QSFP+ data rate.
Multimode fiber
OM3: Up to 100 meters connection distance.
OM4: Up to 150 meters connection distance.
Operates at 850nm wavelength.
Compatible with MPO/MTP connector.

40Gbps Singlemode QSFP+



Product Code: F2-Q+LC-LR4-D
40 Gbps QSFP+ data rate.
Singlemode fiber, up to 2 km connection distance.
Hot-pluggable.
Duplex LC connector.
Digital Diagnostics Monitoring (DDM) support.

40Gbps Singlemode QSFP+



Product Code: F2-Q+M-LR4

40 Gbps QSFP+ data rate.

Singlemode fiber, up to 10 km connection distance.

Operates at 1310nm wavelength.

MPO12 (APC) connector.

Compatible with MPO/MTP connector.

40Gbps Singlemode QSFP+



Product Code: F2-Q+LC-IR4-D

40 Gbps QSFP+ data rate.

Singlemode fiber, available in 10 km or 20 km connection distance.

Temperature Range: 0 to 70°C.

Duplex LC connector.

Digital Diagnostics Monitoring (DDM) support.

40Gbps Singlemode QSFP+



Product Code: F2-Q+LC-ER4-D

40 Gbps QSFP+ data rate.

Singlemode fiber, up to 40 km connection distance.

Temperature Range: 0 to 70°C.

Duplex LC connector.

Digital Diagnostics Monitoring (DDM) support.

100Gbps Multimode QSFP28



Product Code: F2-Q8-M-SR4

100 Gbps QSFP28 data rate.

Multimode fiber, up to 100 meters connection distance with OM4.

Compatible with MPO/MTP connector.

SFP

100Gbps Singlemode QSFP28



Product Code: F2-Q8-M-IR4

100 Gbps QSFP28 data rate.

Singlemode fiber, up to 2 km connection distance.

Compatible with MPO/MTP connector.

100Gbps Multimode QSFP28



Multimode Product Code: F2-Q8-LC-IR4

100 Gbps QSFP28 data rate.

Singlemode fiber.

Duplex LC connector.

100Gbps Singlemode QSFP28



SingleMode Product Code: F2-Q8-LC-LR4

100 Gbps QSFP28 data rate.

Singlemode fiber.

Duplex LC connector.

1Gbps Copper RJ45



Product Code:F2-C-RJ-10/100/1000

1 Gbps data rate.

Cat6/Cat6A: Up to 100 meters connection distance.

Temperature Range: 0°C to +70°C.

RJ45 connector.

10Gbps Copper RJ45



Product Code: F2-C-RJ-10G

10 Gbps data rate.

Cat6: Up to 55 meters connection distance.

Cat6A: Up to 100 meters connection distance.

Temperature Range: 0°C to +70°C.

RJ45 connector.

Industrial Type

1.25Gbps Multimode SFP



Product Code: F2-SX-MM-D-I

1.25 Gbps SFP data rate.

Multimode fiber.

Temperature Range: -40°C to +85°C.

DDM (Digital Diagnostics Monitoring) support.

Duplex LC connector.

Industrial type.

1.25Gbps Singlemode SFP



Product Code: F2-LX-SM-10-D-I

1.25 Gbps SFP data rate.

Singlemode fiber.

Temperature Range: -40°C to +85°C.

DDM (Digital Diagnostics Monitoring) support.

Duplex LC connector.

Industrial type.

10Gbps Multimode SFP+



Product Code: F2-SR-MM-D-I

10 Gbps SFP+ data rate.

Multimode fiber.

Temperature Range: -40°C to +85°C.

DDM (Digital Diagnostics Monitoring) support.

Duplex LC connector.

Industrial type.

10Gbps Singlemode SFP



Product Code: F2-LR-SM-10-D-I

10 Gbps SFP+ data rate.

Singlemode fiber.

Temperature Range: -40°C to +85°C.

DDM (Digital Diagnostics Monitoring) support.

Duplex LC connector.

Industrial type.

Industrial Type

25Gbps Multimode SFP28



Product Code: F2-S8-SR-D-I
25 Gbps SFP28 data rate.
Multimode fiber.
Temperature Range: -40°C to +85°C.
DDM (Digital Diagnostics Monitoring) support.
Duplex LC connector.
Industrial type.

25Gbps Singlemode SFP28



Product Code: F2-S8-LR-D-I
25 Gbps SFP28 data rate.
Singlemode fiber.
Temperature Range: -40°C to +85°C.
DDM (Digital Diagnostics Monitoring) support.
Duplex LC connector.
Industrial type.

40Gbps Multimode QSFP+



Product Code:F2-Q+M-SR4-D-I
40 Gbps QSFP+ data rate.
Multimode fiber.
Temperature Range: -40°C to +85°C.
Duplex LC connector.
DDM (Digital Diagnostics Monitoring) support.
Industrial type.

40Gbps Singlemode QSFP+



Product Code:F2-Q+LC-LR4-D-I
40 Gbps QSFP+ data rate.
Singlemode fiber.
Temperature Range: -40°C to +85°C.
Duplex LC connector.
DDM (Digital Diagnostics Monitoring) support.
Industrial type.

Industrial Type

1Gbps Copper RJ45



Product Code: F2-C-RJ-1G-I

1 Gbps data rate.

Cat6/Cat6A: Up to 100 meters connection distance.

Temperature Range: -40°C to +85°C.

RJ45 connector.

Industrial type.

10Gbps Copper RJ45



Product Code: F2-C-RJ-10G-I

10 Gbps data rate.

Cat6: Up to 55 meters connection distance.

Cat6A: Up to 100 meters connection distance.

Temperature Range: -40°C to +85°C.

RJ45 connector.

Industrial type.

BI-DI Industrial Type

Bi-Directional 1Gbps SFP



Product Code: F2-BD1-3/5-20-D-I / F2-BD1-3/5-20-D-I

Bi-Directional 1 Gbps SFP+ data rate.

Temperature Range: -40°C to +85°C.

Digital Diagnostics Monitoring (DDM) support.

Simplex LC connector.

Industrial type.

Bi-Directional 10Gbps SFP+



Product Code: F2-BD10-12/13-10-D-I / F2-BD10-13/12-10-D-I

Bi-Directional 10 Gbps SFP+ data rate.

Temperature Range: -40°C to +85°C.

Digital Diagnostics Monitoring (DDM) support.

Simplex LC connector.

Industrial type.

BI-DI

Bi-Directional 1Gbps SFP



Product Code: F2-BD1-3/5-20-D / F2-BD1-3/5-20-D

Bi-Directional 1 Gbps SFP+ data rate.

Temperature Range: 0°C to +70°C.

DDM (Digital Diagnostics Monitoring) support.

Simplex LC connector.

Bi-Directional 10Gbps SFP+



Product Code: F2-BD10-12/13-10-D / F2-BD10-13/12-10-D

Bi-Directional 10 Gbps SFP+ data rate.

Temperature Range: 0°C to +70°C.

DDM (Digital Diagnostics Monitoring) support.

Simplex LC connector.

BI-DI

40Gbps QSFP+ BI-DI Multimode 100m Bi-Di Hot Pluggable 850/900nm Duplex LC Connector



Product Code: F2-QBD-LC-SR4

40 Gbps QSFP+ BI-DI data rate.

Multimode fiber, up to 100 meters connection distance.

Bi-Directional communication support.

Hot-pluggable.

Operates at 850/900nm wavelengths.

Compatible with Duplex LC connector.

Breakout Cables

Breakout Cable 40G QSFP+ to 4x 10G SFP+ Copper Passive DAC



Product Code: F2-BRK-1xQ-4xS+A-5MT

AWG30 cable gauge.

Passive cable with no additional electronics.

Supports 40 Gbps total bandwidth, with breakout to four 10 Gbps connections.

Designed for short-range, high-speed connections.

Low insertion loss and high return loss.

Compatible with QSFP+ and SFP+ MSA specifications.

RoHS compliant.

Breakout Cable 40G QSFP+ to 4x 10G SFP+ Active Optical Cable



Product Code: F2-BRK-1xQ-4xS+A-1MT/ 3MT/ 5MT

Active optical cable for high-speed data transmission.

Supports 40 Gbps total bandwidth, with breakout to four 10 Gbps connections.

Designed for medium to long-range connections.

Low insertion loss and high return loss.

Compatible with QSFP+ and SFP+ MSA specifications.

RoHS compliant.

Breakout Cable 100G QSFP28 to 4x 25G SFP28 Active Optical Cable



Product Code: F2-BRK-1xQ8-4xS8+A-1MT/ 3MT/ 5MT

AWG28 cable gauge.

Active optical cable for high-speed data transmission.

Supports 100 Gbps total bandwidth.

Breakout configuration for connecting a single QSFP28 port to four SFP28 ports.

Designed for medium to long-range connections.

Low insertion loss and high return loss.

Compatible with QSFP28 and SFP28 MSA specifications.

RoHS compliant.

AOC Cables

AOC 10G SFP+ to SFP+ Active Optical Cable



Product Code: F2-ACa-S+1MT/ 3MT/ 5MT/ 7MT
10G SFP+ to SFP+ Active Optical Cable (AOC).
Active optical cable for high-speed data transmission.
Supports 10 Gbps total bandwidth.
Designed for medium to long-range connections.
Low insertion loss and high return loss.
Compatible with SFP+ MSA specifications.
RoHS compliant.

AOC 25G SFP28 to SFP28 Active Optical Cable



Product Code: F2-ACa-S28+1MT/ 3MT/ 5MT/ 7MT/ 15MT
25G SFP28 to SFP28 Active Optical Cable (AOC).
Active optical cable for high-speed data transmission.
Supports 25 Gbps total bandwidth.
Designed for medium to long-range connections.
Low insertion loss and high return loss.
Compatible with SFP28 MSA specifications.
RoHS compliant.

AOC 40G SFP+ to SFP+ Active Optical Cable



Product Code: F2-ACa-Q+1MT/ 3MT/ 5MT/ 7MT/ 15MT
40G SFP+ to SFP+ Active Optical Cable (AOC).
Active optical cable for high-speed data transmission.
Supports 40 Gbps total bandwidth.
Designed for medium to long-range connections.
Low insertion loss and high return loss.
Compatible with SFP+ MSA specifications.
RoHS compliant.

AOC 100G SFP+ to SFP+ Active Optical Cable



Product Code: F2-ACa-Q28+1MT/ 3MT/ 5MT/ 7MT/ 15MT
100G SFP+ to SFP+ Active Optical Cable (AOC).
Active optical cable for high-speed data transmission.
Supports 100 Gbps total bandwidth.
Designed for medium to long-range connections.
Low insertion loss and high return loss.
Compatible with SFP+ MSA specifications.
RoHS compliant.

DAC Cables

DAC 1G SFP to SFP Copper Passive DAC



Product Code: F2-DCp-S-1MT/ 3MT/ 5MT

AWG30 cable gauge.

Passive cable with no additional electronics.

Supports 1 Gbps data rate.

Designed for short-range, high-speed connections.

Low insertion loss and high return loss.

Compatible with SFP MSA specifications.

RoHS compliant.

DAC 10G SFP+ to SFP+ Copper Passive DAC



Product Code: F2-DCp-S+1MT/ 3MT/ 5MT

AWG30 cable gauge.

Passive cable with no additional electronics.

Supports 10 Gbps data rate.

Designed for short-range, high-speed connections.

Low insertion loss and high return loss.

Compatible with SFP+ MSA specifications.

RoHS compliant.

DAC 25G SFP28 to SFP28 Copper Passive DAC



Product Code: F2-DCp-S28-1MT/ 3MT/ 5MT

AWG30 cable gauge.

Passive cable with no additional electronics.

Supports 25 Gbps data rate.

Designed for short-range, high-speed connections.

Low insertion loss and high return loss.

Compatible with SFP28 MSA specifications.

RoHS compliant.

DAC 40G QSFP+ to QSFP+ Copper Passive DAC



Product Code: F2-DCp-Q+1MT/ 3MT/ 5MT

AWG30 cable gauge.

Passive cable with no additional electronics.

Supports 40 Gbps data rate.

Designed for short-range, high-speed connections.

Low insertion loss and high return loss.

Compatible with QSFP+ MSA specifications.

RoHS compliant.

DAC 100G QSFP28 to QSFP28 Copper Passive DAC



Product Code:F2-DCp-Q28-1MT/ 3MT/ 5MT

AWG30 cable gauge.

Passive cable with no additional electronics.

Supports 100 Gbps data rate.

Designed for short-range, high-speed connections.

Low insertion loss and high return loss.

Compatible with QSFP28 MSA specifications.

RoHS compliant.

Media Converter

FO Patch Panel LC Type 24Port 19 Sliding Type Empty



Product Code: F2-GMC-SFP

10/100/1000Mbps Ethernet

1000 BASE-SX/LX optical port

Automatic MDI/MDI-X crossover

NMP management optional

Internal Power supply optional

Distances up to 2km for Multi-mode; Up to 120km for Single mode

Electrical port supports Auto-Negotiation for 100Mbps or 1000Mbps, full duplex or half duplex data.

Complies with IEEE 802.3 10Base-T, IEEE 802.3u 100Base-TX, IEEE 802.3ab 1000Base-T, IEEE 802.3z 1000Base-SX/LX

Voltage transient protection on all power and signal input. output lines provide unconditional protection from power surges and other voltage transient events



<>F2
CONNECT

Cabinets

Cabinets

SOHO 19" Wall Mounting Cabinets



Removable rear panel.

Used for installation of small systems.

It has a smoked glass cover on the front.

Competitive price thanks to the economic production structure.

It has a 4 mm tempered glass front door with lock.

Standard depth size; 400 mm and four options of height; 4U, 7U, 9U, 12U.

Ventilation can be achieved by installing 1 or 2 fan modules.



515x400	U 1U=44,45mm	h Inside Height (mm)	H Outside Height (mm)	Weight (Kg)
F2SH-4U400	4	181	225	9
F2SH-7U400	7	314	358	12
F2SH-9U400	9	202	448	14
F2SH-12U400	12	538	582	16

SlimConnect 19" Wall Mounting Cabinets



500x480	U 1U=44,45mm	h Inside Height (mm)	H Outside Height (mm)	Weight (Kg)
F2SL-5U	3U+2U	140		9

Cabinets

ConnectPlus 19" Wall Mounting Cabinets



- Removable rear panel.
- Used for installation of small systems.
- It has a smoked glass cover on the front.
- Competitive price thanks to the economic production structure.
- It has a 4 mm tempered glass front door with lock.
- Standard depth size; 400 mm and four options of height; 4U, 7U, 9U, 12U.
- Ventilation can be achieved by installing 1 or 2 fan modules.



650x450	U 1U=44,45mm	h Inside Height (mm)	H Outside Height (mm)	Weight (Kg)
F2CP-7U450	7	314	371	14
F2CP-9U450	9	403	460	16
F2CP-12U450	12	536	593	19
F2CP-16U450	16	714	771	25
F2CP-20U450	20	892	949	29

600x560	U 1U=44,45mm	h Inside Height (mm)	H Outside Height (mm)	Weight (Kg)
F2CP-7U560	7	314	371	16
F2CP-9U560	9	403	460	18
F2CP-12U560	12	536	593	22
F2CP-16U560	16	714	771	18
F2CP-20U560	20	892	949	34

600x600	U 1U=44,45mm	h Inside Height (mm)	H Outside Height (mm)	Weight (Kg)
F2CP-7U600	7	314	371	19
F2CP-9U600	9	403	460	21
F2CP-12U600	12	536	593	26
F2CP-16U600	16	714	771	32
F2CP-20U600	20	892	949	39

Cabinets

Ecowall Wall Mounting Cabinets



The front and side covers are openable, lockable and easily removable.

The rear cover is made by high strength 1,5 mm DKP sheet that provides high strength with holes for wall mounting.

Ventilation is provided by cooling units with 1 or 2 fans.

Cabinets have cable entries from 3 different points on the bottom frame, top frame and rear cover.

If required, it can be used as a floor type by attaching a fixed foot or castor.



650x450	U 1U=44,45mm	h Inside Height (mm)	H Outside Height (mm)	Weight (Kg)
F2EW-7U450	7	314	371	14
F2EW-9U450	9	403	460	16
F2EW-12U450	12	536	593	19
F2EW-16U450	16	714	771	25
F2EW-20U450	20	892	949	29

600x560	U 1U=44,45mm	h Inside Height (mm)	H Outside Height (mm)	Weight (Kg)
F2EW-7U560	7	314	371	16
F2EW-9U560	9	403	460	18
F2EW-12U560	12	536	593	22
F2EW-16U560	16	714	771	18
F2EW-20U560	20	892	949	34

Cabinets

ConnectPlus 19" Free Standing Cabinets



ConnectPlus cabinets have removable, lockable covers on all four sides.

The rear and side covers are made of DKP sheet metal, while the front features 4 mm thick, impact-resistant, tempered smoked glass, supported by metal frames.

The main frame is 1.5 mm steel, and the side and rear covers are 1.2 mm steel sheet.

The interlocking frame and corner profiles provide high strength.

A protective hood on top prevents dust from entering.

It has 4 adjustable 19" rails and options for wheels or fixed feet



600x600	U 1U=44,45mm	h Inside Height (mm)	H Outside Height (mm)	Weight (Kg)
F2CP-16U6060	16	714	942	46
F2CP-20U6060	20	892	1120	52
F2CP-26U6060	26	1158	1386	65
F2CP-32U6060	32	1425	1653	75
F2CP-36U6060	36	1603	1831	81
F2CP-39U6060	39	1736	1964	86
F2CP-42U6060	42	1870	2098	91
F2CP-44U6060	44	1955	2182	94

600x800	U 1U=44,45mm	h Inside Height (mm)	H Outside Height (mm)	Weight (Kg)
F2CP-16U6080	16	714	942	54
F2CP-20U6080	20	892	1120	62
F2CP-26U6080	26	1158	1386	72
F2CP-32U6080	32	1425	1653	83
F2CP-36U6080	36	1603	1831	89
F2CP-39U6080	39	1736	1964	94
F2CP-42U6080	42	1870	2098	100
F2CP-44U6080	44	1955	2182	104

Cabinets

800x800	U 1U=44,45mm	h Inside Height (mm)	H Outside Height (mm)	Weight (Kg)
F2CP-32U8080	32	1425	1653	102
F2CP-36U8080	36	1603	1831	111
F2CP-39U8080	39	1736	1964	117
F2CP-42U8080	42	1870	2098	123
F2CP-44U8080	44	1955	2182	127

600x1000	U 1U=44,45mm	h Inside Height (mm)	H Outside Height (mm)	Weight (Kg)
F2CP-16U60100	16	714	942	65
F2CP-20U60100	20	892	1120	72
F2CP-26U60100	26	1158	1386	82
F2CP-32U60100	32	1425	1653	95
F2CP-36U60100	36	1603	1831	103
F2CP-39U60100	39	1736	1964	108
F2CP-42U60100	42	1870	2098	114
F2CP-44U60100	44	1955	2182	118

800x1000	U 1U=44,45mm	h Inside Height (mm)	H Outside Height (mm)	Weight (Kg)
F2CP-32U80100	32	1425	1653	83
F2CP-36U80100	36	1603	1831	89
F2CP-39U80100	39	1736	1964	94
F2CP-42U80100	42	1870	2098	100
F2CP-44U80100	44	1955	2182	104

Cabinets

Connect 19" Free Staning Cabinets



Connect cabinets have four side openable, lockable and easily removable covers. The rear and side covers are made by DKP sheet and the front side is made by 4 mm thick, impact-resistant, tempered and smoked-colored glass which is supported by metal frames. The frame and corner profiles have nested structure and this structure provides high strength. Ventilation is provided by cooling units with 2,4 or 6 fans. There are four 19" mounting profiles and these profiles can move deep within the cabinet. It has the option of using wheeled and fixed legs



600x600	U 1U=44,45mm	h Inside Height (mm)	H Outside Height (mm)	Weight (Kg)
F2C-16U6060	16	714	942	46
F2C-20U6060	20	892	1120	52
F2C-26U6060	26	1158	1386	65
F2C-32U6060	32	1425	1653	75
F2C-36U6060	36	1603	1821	81
F2C-42U6060	42	1870	2098	91

600x800	U 1U=44,45mm	h Inside Height (mm)	H Outside Height (mm)	Weight (Kg)
F2C-16U6080	16	714	942	54
F2C-20U6080	20	892	1120	62
F2C-26U6080	26	1158	1386	72
F2C-32U6080	32	1425	1653	83
F2C-36U6080	36	1603	1821	89
F2C-42U6080	42	1870	2098	100

Cabinets

800x800	U 1U=44,45mm	h Inside Height (mm)	H Outside Height (mm)	Weight (Kg)
F2C-26U8080	26	1158	942	100
F2C-32U8080	32	1425	1120	102
F2C-36U8080	36	1603	1386	111
F2C-42U8080	42	1870	1653	123

600x1000	U 1U=44,45mm	h Inside Height (mm)	H Outside Height (mm)	Weight (Kg)
F2C-16U60100	16	714	942	65
F2C-20U60100	20	892	1120	72
F2C-26U60100	26	1158	1386	82
F2C-32U60100	32	1425	1653	95
F2C-36U60100	36	1603	1821	103
F2C-42U60100	42	1870	2098	114

800x1000	U 1U=44,45mm	h Inside Height (mm)	H Outside Height (mm)	Weight (Kg)
F2C-26U80100	26	1158	1386	110
F2C-32U80100	32	1425	1653	116
F2C-36U80100	36	1603	1831	125
F2C-42U80100	42	1870	2098	136

Cabinets

Connect Lite Free Standing Cabinets



Connect Lite cabinets have removable, lockable covers on all sides.

The rear and side covers are made of DKP sheet metal, and the front is 4 mm thick, impact-resistant, tempered smoked glass, supported by metal frames.

Ventilation is provided by 2 or 4 fan modules.

It has 4 adjustable 19" mounting rails, movable along the cabinet depth.

A brush cable entry section is located at the bottom chassis.

The cabinets offer options for wheels or fixed feet.



600x600	U 1U=44,45mm	h Inside Height (mm)	H Outside Height (mm)	Weight (Kg)
F2CL-12U6060	12	536	764	36
F2CL-16U6060	16	714	940	42
F2CL-20U6060	20	892	1118	48
F2CL-26U6060	26	1158	1384	60
F2CL-32U6060	32	1425	1651	69
F2CL-36U6060	36	1603	1829	74
F2CL-42U6060	42	1870	2096	84

600x800	U 1U=44,45mm	h Inside Height (mm)	H Outside Height (mm)	Weight (Kg)
F2CL-12U6080	12	536	764	41
F2CL-16U6080	16	714	940	49
F2CL-20U6080	20	892	1118	57
F2CL-26U6080	26	1158	1384	67
F2CL-32U6080	32	1425	1651	77
F2CL-36U6080	36	1603	1829	82
F2CL-42U6080	42	1870	2096	93

Cabinets

Connect Pro Server Cabinet



Server cabinets have four side openable, lockable and easily removable covers.

The main frame is 1,5 mm, side and rear covers are 1,2 mm steel sheet.

The frame and corner profiles have nested structure and this structure provides high strength.

Ventilation is provided by cooling units with 2, 4 or 6 fans.

At the bottom and top parts, there is a dust-protected brushed cable entry.

It has the option of using wheeled and fixed legs.

The cabinet has a balance foot against tilting.

Single Layer 600x1000	U 1U=44,45mm	h Inside Height (mm)	H Outside Height (mm)	Weight (Kg)
F2CPR-26U60100	26	1158	1386	79
F2CPR-32U60100	32	1425	1653	87
F2CPR-42U60100	42	1870	2098	106

Double Layer 800x1000	U 1U=44,45mm	h Inside Height (mm)	H Outside Height (mm)	Weight (Kg)
F2CPR-36U80100	36	1603	1831	105
F2CPR-42U80100	42	1870	2098	120

Connect Pro Lite Server Cabinet



Server cabinets have four side openable, lockable and easily removable covers.

The main frame is 1,5 mm, side and rear covers are 1,2 mm steel sheet.

The frame and corner profiles have nested structure and this structure provides high strength.

Ventilation is provided by cooling units with 2, 4 or 6 fans.

At the bottom and top parts, there is a dust-protected brushed cable entry.

It has the option of using wheeled and fixed legs.

The cabinet has a balance foot against tilting.

Single Layer 600x1000	U 1U=44,45mm	h Inside Height (mm)	H Outside Height (mm)	Weight (Kg)
F2CPRL-42U60100	42	1870	2098	106

Double Layer 800x1000	U 1U=44,45mm	h Inside Height (mm)	H Outside Height (mm)	Weight (Kg)
F2CPRL-36U80100	36	1603	1831	105
F2CPRL-42U80100	42	1870	2098	120

Cabinets

800x800	U 1U=44,45mm	h Inside Height (mm)	H Outside Height (mm)	Weight (Kg)
F2CL-26U8080	26	1158	1384	75
F2CL-32U8080	32	1425	1651	95
F2CL-36U8080	36	1603	1829	103
F2CL-42U8080	42	1870	2096	115

600x1000	U 1U=44,45mm	h Inside Height (mm)	H Outside Height (mm)	Weight (Kg)
F2CL-12U60100	12	536	764	47
F2CL-16U60100	16	714	940	54
F2CL-20U60100	20	892	1118	61
F2CL-26U60100	26	1158	1384	71
F2CL-32U60100	32	1425	1651	83
F2CL-36U60100	36	1603	1829	91
F2CL-42U60100	42	1870	2096	102

800x1000	U 1U=44,45mm	h Inside Height (mm)	H Outside Height (mm)	Weight (Kg)
F2CL-26U80100	26	1158	1384	76
F2CL-32U80100	32	1425	1651	110
F2CL-36U80100	36	1603	1829	119
F2CL-42U80100	42	1870	2096	130

Cabinets

IP66 Field Type Cabinet



Zirconia + zinc plated with superior effect against corrosion.

Openable and lockable front cover.

Air inlet louvers with dust filter.

Air vent part with dust filtered fan.

Openable roof structure that provides external access to the fan module.

1.5 mm DKP steel sheet for outer paries.

1 mm galvanized steel sheet for inner paries (optional).

Single Layer 600x450	U 1U=44,45mm	h Inside Height (mm)	H Outside Height (mm)	Weight (Kg)
F2OUTZ-7U450	7	361	586	34
F2OUTZ-9U450	9	450	675	38
F2OUTZ-12U450	12	583	808	43
F2OUTZ-16U450	16	761	986	51
F2OUTZ-20U450	20	939	1163	59

Double Layer 600x450	U 1U=44,45mm	h Inside Height (mm)	H Outside Height (mm)	Weight (Kg)
F2OUTZW-7U450	7	361	586	39
F2OUTZW-9U450	9	450	675	43
F2OUTZW-12U450	12	583	808	51
F2OUTZW-16U450	16	761	986	60
F2OUTZW-20U450	20	939	1163	70

Single Layer 600x600	U 1U=44,45mm	h Inside Height (mm)	H Outside Height (mm)	Weight (Kg)
F2OUTZ-7U600Z	7	361	586	41
F2OUTZ-9U600Z	9	450	675	45
F2OUTZ-12U600Z	12	583	808	52
F2OUTZ-16U600Z	16	761	986	60
F2OUTZ-20U600Z	20	939	1163	69

Double Layer 600x600	U 1U=44,45mm	h Inside Height (mm)	H Outside Height (mm)	Weight (Kg)
F2OUTZW-7U450	7	361	586	46
F2OUTZW-9U450	9	450	675	51
F2OUTZW-12U450	12	583	808	60
F2OUTZW-16U450	16	761	986	70
F2OUTZW-20U450	20	939	1163	82

Cabinets

IP66 Wall Mounted



Zirconia + zinc plated with superior effect against corrosion.

Openable and lockable front cover.

Air inlet louvers with dust filter.

Air vent part with dust filtered fan.

Openable roof structure that provides external access to the fan module.

Cable entry slots located in the lower part.

Full protection against dust and water ingress with IP66.

Single Layer 600x450	U 1U=44,45mm	h Inside Height (mm)	H Outside Height (mm)	Weight (Kg)
F2OUTD-7U450	7	361	486	30
F2OUTD-9U450	9	450	575	33
F2OUTD-12U450	12	583	708	35
F2OUTD-16U450	16	761	886	37
F2OUTD-20U450	20	939	1063	39

Double Layer 600x450	U 1U=44,45mm	h Inside Height (mm)	H Outside Height (mm)	Weight (Kg)
F2OUTDW-7U450	7	361	486	34
F2OUTDW-9U450	9	450	575	38
F2OUTDW-12U450	12	583	708	44
F2OUTDW-16U450	16	761	886	46
F2OUTDW-20U450	20	939	1063	49

Single Layer 600x600	U 1U=44,45mm	h Inside Height (mm)	H Outside Height (mm)	Weight (Kg)
F2OUTD-7U600	7	361	486	37
F2OUTD-9U600	9	450	575	40
F2OUTD-12U600	12	583	708	41
F2OUTD-16U600	16	761	886	45
F2OUTD-20U600	20	939	1063	48

Double Layer 600x600	U 1U=44,45mm	h Inside Height (mm)	H Outside Height (mm)	Weight (Kg)
F2OUTDW-7U600Z	7	361	486	45
F2OUTDW-9U600	9	450	575	50
F2OUTDW-12U600	12	583	708	51
F2OUTDW-16U600	16	761	886	58
F2OUTDW-20U600	20	939	1063	59

Cabinets

IP66 Mast Type Mobese Rack Cabinet



Full protection against dust and water ingress with IP66.

1.5 mm DKP steel sheet for outer paries.

1 mm galvanized steel sheet for inner paries (optional).

Zirconia + zinc plated with superior effect against corrosion.

Openable roof structure that provides external access to the fan module.

The opportunity of hidden cable entry with pipe structure in the rear part.

4 camera connection points.

650x450	U 1U=44,45mm	h Inside Height (mm)	H Outside Height (mm)	Weight (Kg)
F2MBS-9U450	9	450	575	42

